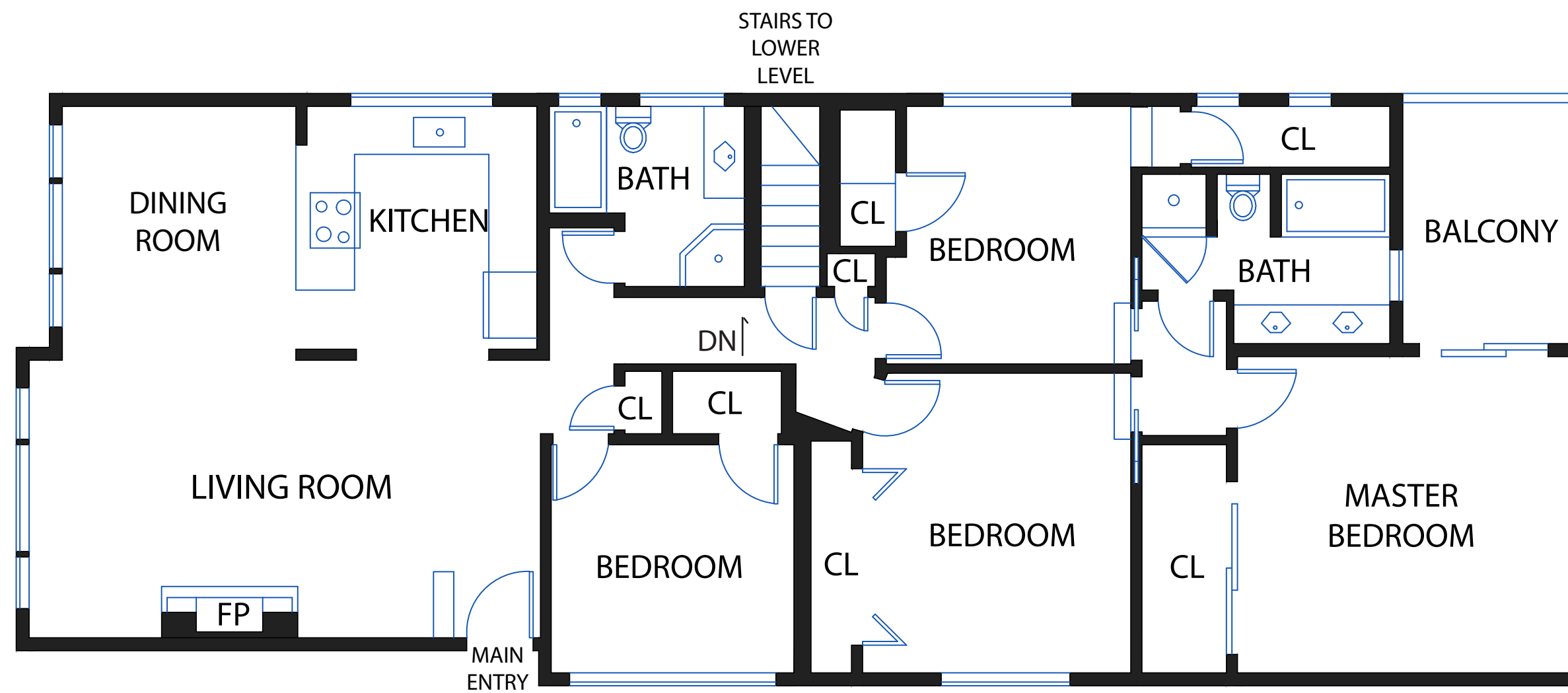


155 GLENWOOD AVENUE

MAIN LEVEL

LIVING
APPROX. 1760 SQF

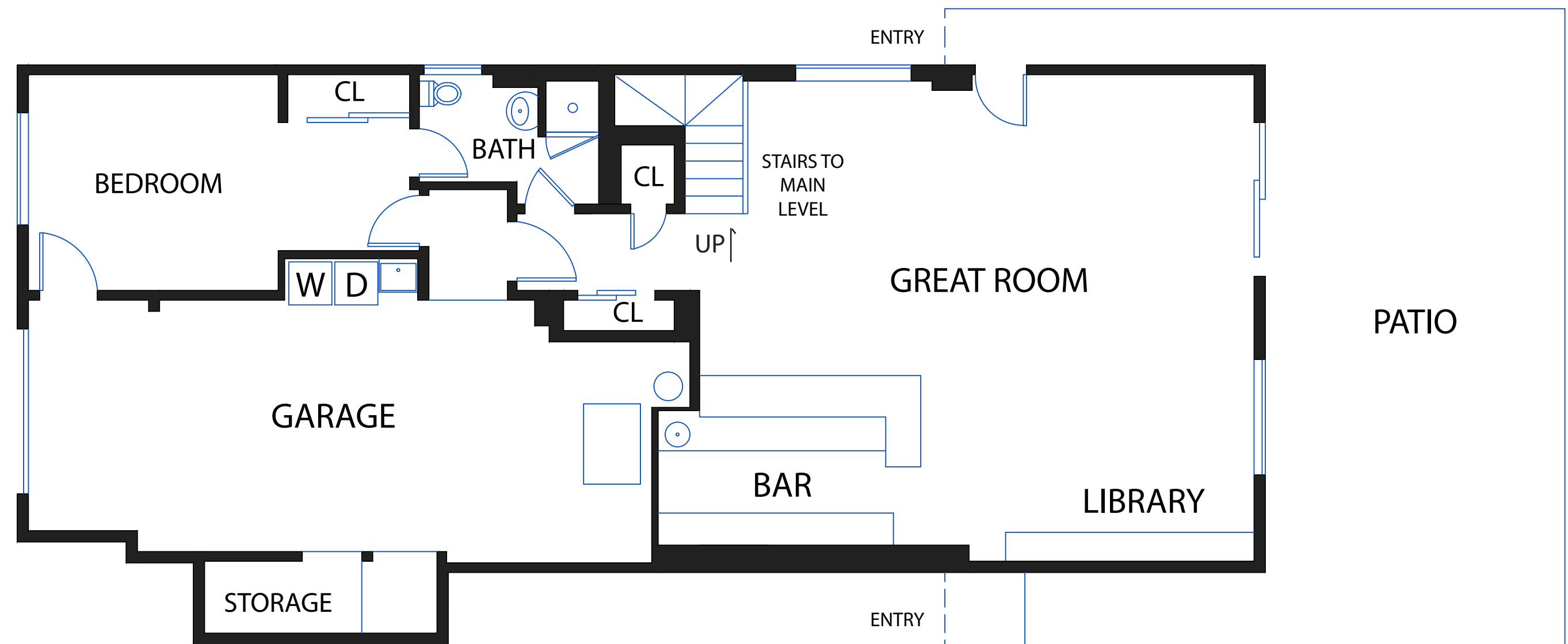


LOWER LEVEL

LIVING
APPROX. 1160 SQF

GARAGE
APPROX. 490 SQF

PATIO
APPROX. 520 SQF



NOTE: FLOOR PLANS, SQUARE FOOTAGE, AND DIMENSIONS ARE APPROXIMATE AND NOT FOR CONSTRUCTION PURPOSES. PROSPECTIVE BUYERS SHOULD NOT RELY ON THESE PLANS, SQUARE FOOTAGE, AND DIMENSIONS IN MAKING THEIR PURCHASE DECISION AND SHOULD CAREFULLY VERIFY THE ABOVE ITEMS AND ALL OTHER INFORMATION HEREIN.